



Address : No. 296, Mao Tse Toung Blvd, Phnom Penh
 Tel : (855-23) 424 888
 Fax : (855-23) 424 885
 Email : phnompenh@interconti.com
 Website : www.intercontinental.com

InternContinental Phnom Penh is the city's first international hotel and a striking symbol of its growth and modernization. Part of a landmark development in the newly defined business district, the hotel is 10 minutes from the Russian Market, 5 minutes from a major shopping center and within 20 minutes from the National Museum, the Royal Palace and the Central Market.

Room type	Room facilities	Hotel facilities	Food & Beverage
255 Deluxe (34sqm, 122Twn, 133DbI) 062 Club (34sqm, 29Twn, 33DbI) <u>029 Suite</u> 346 rooms	- IDD telephone & voice mail - Cable TV - Mini-bar - Safety box - Air-con - Tea & Coffee making facilities - Bathtub & shower	- Fitness center - Swimming pool - Sauna - Safety Deposit Box - Convenience store	- Regency Café: at the Lobby level. Serves breakfast & International buffets. Capacity 150pax. - Xiang Palace: Second floor. Serves Chinese food for a la cart and set menu. Capacity 142pax. - Lobby Bar: lobby level, serving snack and all drinks. Capacity is 108 pax . Opening Hour: 10:00hour - 23:00hour



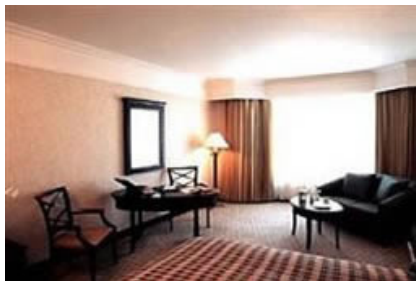
Facade



Lobby



Lounge



Guest Room



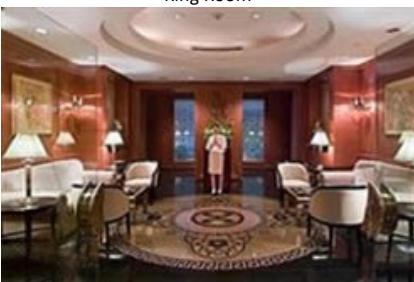
King Room



Living Room



Ballroom



Restaurant



Restaurant



Restaurant



Fitness Center



Pool